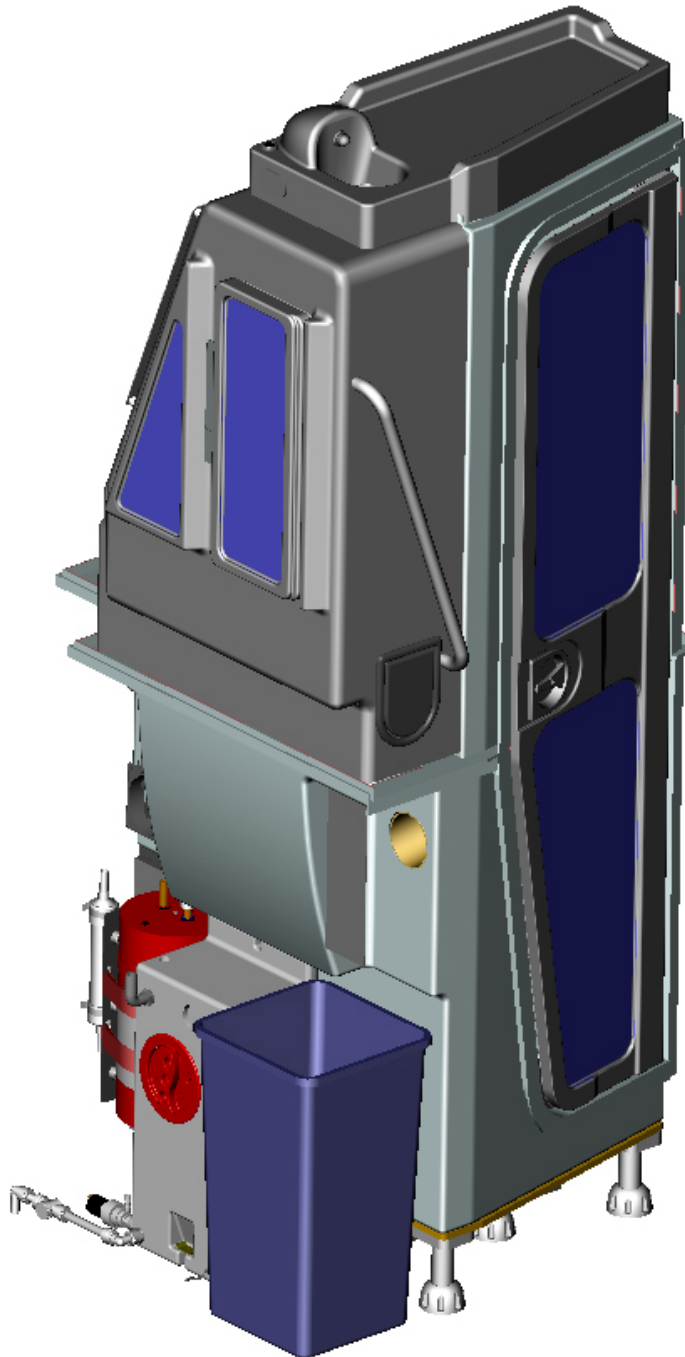


Shades Technics

# ***BOVA 5529CS Toilet Cubicle***



# **Manual**

Catalogue No. 746198

<b>CUBICLE OPERATING INSTRUCTIONS</b>	<b>3</b>
<b>CLEANING &amp; HYGENE</b>	<b>5</b>
<b>CUBICLE MAINTENANCE</b>	<b>6-8</b>
<b>WARRANTY CLAIMS</b>	<b>9</b>
<b>SPARE PARTS CATALOGUE</b>	
• Door	<b>10</b>
• Sink	<b>12</b>
• Vanity	<b>14</b>
• Fridge	<b>16</b>
• Drinks Boiler	<b>18</b>
• Electrical Panel	<b>20</b>
• Toilet Bowl	<b>22</b>
• Worktop	<b>24</b>
• Soil Tank	<b>26</b>
• Handwash Tank	<b>28</b>
• Cubicle Base	<b>30</b>
• Cubicle Top	<b>32</b>
• External	<b>34</b>
• Legends	<b>36</b>
<b>WIRING DIAGRAMS</b>	<b>37</b>
<b>PARTS REPLACEMENT INSTRUCTIONS</b>	<b>39</b>


### **To Switch The Cubicle On:**


Engage the WC Master switch on the dashboard. The cubicle interior lamp will turn on for 30 seconds and then switch off. The cubicle is now ready to use. *(It is recommended that the vehicle engine is running)*


### **Cubicle Interior Light:**

On entry, the interior lamp will come on automatically and illuminate the “Occupied” lamp. The interior lamp is controlled by a movement sensor which will switch off the light automatically shortly after the cubicle is vacated.

### **To Flush The Toilet:**


Push the flush button  once to flush the toilet with a set quantity of water. Should a further flush be required, wait for the flush cycle to complete then press the button again. NOTE:

*(When the holding tank is full, the dashboard LED  will illuminate and the “Occupied” lamp will signal. The toilet is now out of use until the holding tank is emptied.)*

*(When the clean water tank is empty the dashboard LED  will illuminate and the “Occupied” lamp will signal. The toilet is now out of use until the water tank is re-filled.)*

### **To Wash Your Hands:**

Depress the handwash button  once to dispense a set amount of water.

*(When the handwash tank is empty the dashboard LED  will illuminate to alert the driver..)*

### **Cubicle Extractor Fan:**

The ventilator fan runs continuously when the master switch is ON but has the option to only work when the light is activated.

### **Water Tank Filling & Emptying**

Tanks are filled via the hose connectors located in the side locker. The holding tank is emptied pneumatically by pushing a button in the locker. The park brake will need to be engaged for this to work.

## **To Switch The Kitchen On:**

Engage the Kitchen Master switch on the dashboard. The kitchen lamp will turn on, the boiler LED panel will light and fridge fan will start. *(It is recommended that the vehicle engine is running)*

## **Kitchen Hot Drinks System:**

The water heater will take 20-30 minutes to reach temperature and the hot faucet should start to drip. This is due to the expansion inside the boiler as it gets hot.

To dispense the hot water, place a cup inside the sink, push and hold the RED button until finished.

## **Coolbox - Fridge:**

The coolbox will take approximately 2 hours to get to 5 Deg C from warm but can go as low as 3 Deg C during operation. This time depends on the contents of the fridge and the times are based on it being empty. For best performance it is advisable to introduce pre-chilled items into the fridge.

The unit is equipped with an 'ECO' mode which allows the unit to run on low power when the vehicle is switched off and this can maintain a steady 5 Deg C.

The battery guard will detect low voltage in 'ECO' mode and cut power to the unit saving the batteries.

### **Cubicle Cleaning**

The cubicle is manufactured from Glass Reinforced Plastic (GRP) with high gloss interior and lightly textured exterior surfaces. This surface finish is delicate and must only be washed down using a mild detergent. The use of a caustic or abrasive material is not recommended, as this will affect the appearance.

### **Toilet Bowl Cleaning**

To protect the finish of the GRP toilet bowl do not use abrasives of any kind. To clean the bowl, use a mild anti-bacterial detergent and suitable brush.

### **Litter Bin**

The cubicle features 45 litre plastic bin located in the locker. The bin is filled via two openings, inside the toilet and outside in the aisle. The use of a bin liner is recommended.

### **Soap Dispenser**

To fill the dispenser, lift the lid of the dispenser and fill with liquid soap.

### **Toilet Roll**

It is recommended that a high biodegradable paper is used at all times.

**Cat No. = 800103 Pack of 36.**

**Domestic grade toilet paper is not recommended as this can block the system.**

The toilet roll is located inside the lower vanity door. Unlock and open the door, slide the roll onto the spindle.

### Daily Routine

- Prior to the vehicle entering service the holding tank should be charged with an additive to sanitise the effluent.
- The recommended product is **Shades Super Sani ECO**, formulated from natural essential oils, this formaldehyde-free formula is contained within a water soluble membrane. A single 16 gram sachet contains the recommended dosage for 110 litre capacity holding tank and will function for a maximum of three days.  
To apply:
  1. Ensure the holding tank is empty.
  2. Check the tank evacuation valve is closed
  3. Check the WC clean water tank is full.
  4. Switch on power to the cubicle (see page 3)
  5. Press the flush button to open the toilet valve and drop the complete sachet into the bowl.

**Cat No. 800025 (Box 100) or Cat No. 800026 (Carton 1000)**

**Caution**  
**Do not open the sachet .**

- It is recommended that the WC supply tank is drained and the holding tank is emptied at the end of every day.
- The hand wash tank should be emptied and re-filled daily. To help maintain a clean tank and freshwater the use of a sanitiser is recommended. Shades can supply a suitable product that disinfects the water, that is safe to drink and non-irritable to the skin and eyes. **Cat No. 800060**

### Weekly Routine

- Check extractor fan function.
- Inspect the security of the faucet, door hinges and toilet seat. Check the operation of the cubicle door and lock function.
- Open vanity door, check electrical and plumbing connections for security and leaks.
- Check water flow to the hand basin is smooth and constant.

### Quartely Routine

- Flush out holding tank with clean water. (the holding tank must be empty and the vehicle positioned so that the holding tank evacuation valve is over a sewage drainage point)  
To flush out:
  1. Switch on the cubicle.
  2. Connect a hosepipe to a mains water supply.
  3. Push a hose pipe through the flap in the bottom of the bowl and into the tank.
  4. Turn on the water to the hose pipe and fill the holding tank, being careful not to overfill.
  5. Switch off the water to the hose and open the evacuation valve to empty the tank.
  6. Press the flush button to open the valve and remove the hosepipe.
- Lubricate holding tank evacuation valve. (to be carried out immediately after flushing through the holding tank).  
Undo the four fixing bolts holding the soil valve assembly together and remove the main body section. Lubricate the slide paddle using lithium grease or similar so the open/close operation is smooth. Replace the valve body and bolt together. Do not over tighten as this will restrict the operation of the valve.
- Disinfect the hand wash tanks and flush through with clean water.

If the vehicle is to be parked in zero or sub-zero temperatures, it is imperative that all water containers are completely drain beforehand.

### Note

No warranty claims will be accepted on any winter damaged parts.

## Jump Starting

When jump starting the vehicle, please ensure that the dashboard master Switch, **WC**, is **off!**

## Fault Reporting Procedure

1. In the unlikely event of a fault occurring an emergency parts kit has been supplied along with the enclosed comprehensive fault analysis flow chart
2. Using these charts, determine the cause of the fault and replace the faulty item from the kit if possible.
3. To order a replacement kit or non-kit part contact the dealer as specified on the contents page (Page 2) of this manual, quoting the cubicle serial number.
4. In order for replacement goods to be dispatched a simple warranty procedure must be followed.

### **Notes:**

- **Tampering, unauthorised involvement or preventable damage will result in a charge being levied**



## Warranty Claim Procedure

Shades Technics offer a comprehensive warranty cover for all products, valid for 24 months from the vehicle's date in service.

**Contact the dealer or supplier from where the vehicle was purchased.**

*The dealer/supplier will then contact Shades Technics who will fax a warranty claim form to the customer.*

**Complete the warranty claim form, ensuring all details are filled in and fax back to Shades Technics on +44 (0)1992 501669**

*Shades Technics will dispatch any parts required or organise rectification via one of the service points listed at the back of this parts & service manual*

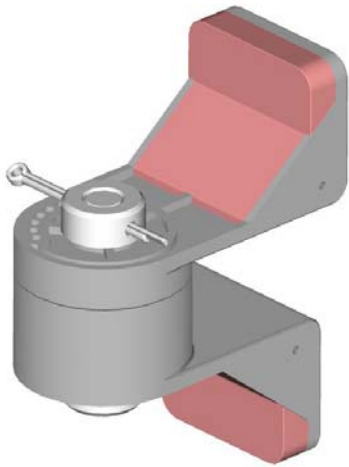
**Please return any fault parts which have been replaced under warranty within 14 days or a charge may be levied**

# Cubicle Door Spares

No.	Description	Part No.	Qty
1	Door	B0661977	1
2	Door Hinge Upper	B0661405	1
3	Door Hinge Lower	B0661406	1
4	Coat Hook	B0661030	1
5	Door Lock	B0661205	1
6	Privacy Angle	B0661408	1

<b>Shades Technics</b> National, England Tel: 01223 303031		Part No. B0661977 Change Description: A - New Product		TOLERANCES: mm .X = ±0.1 .XX = ±0.01 .XXX = ±0.005		DRAWN BY: [Signature] CHECKED BY: [Signature]		DATE: 10/06/07 DATE: 05/05/00 DATE: 10/06/00		TITLE: 5529 Door Assembly (centre toilet)			
Issue Date: 10/06/07 Issue No: 1 Issue A		Drawn By: [Signature] Checked By: [Signature]		PUBLISHED: [Signature]		APPROVED BY: [Signature]		SCALE: 1:1		MATERIAL: - FINISH: -		DRAWING No. ST6357	
Doc Release Status: RELEASED The drawing is the property of Shades Technics. It must not be loaned, copied or reproduced without the prior written consent of Shades Technics, Harrogate, North Yorkshire, UK.													



2

Upper Pivot Toilet Door Hinges  
Cat No: 661405

Lower Pivot Toilet Door Hinges  
Cat No: 661406



4

Coat Hook  
Cat No. 661030



5

Door Lock for LH Cubicle  
Cat No: 661205



6

Door Privacy Angle  
Cat No: 661408

No.	Description	Part No.	Qty
1	Button	B0714007	1
2	Tap	B0701555	1
3	Sink Waste	B0701552	1

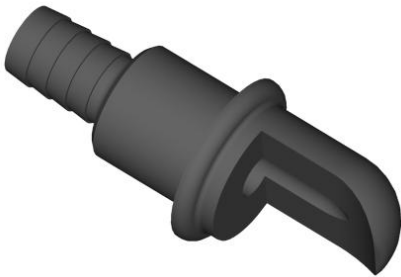
<b>Shades Technics</b> (Pty) Ltd 100, 101, 102, 103, 104, 105, 106, 107, 108, 109, 110, 111, 112, 113, 114, 115, 116, 117, 118, 119, 120, 121, 122, 123, 124, 125, 126, 127, 128, 129, 130, 131, 132, 133, 134, 135, 136, 137, 138, 139, 140, 141, 142, 143, 144, 145, 146, 147, 148, 149, 150, 151, 152, 153, 154, 155, 156, 157, 158, 159, 160, 161, 162, 163, 164, 165, 166, 167, 168, 169, 170, 171, 172, 173, 174, 175, 176, 177, 178, 179, 180, 181, 182, 183, 184, 185, 186, 187, 188, 189, 190, 191, 192, 193, 194, 195, 196, 197, 198, 199, 200, 201, 202, 203, 204, 205, 206, 207, 208, 209, 210, 211, 212, 213, 214, 215, 216, 217, 218, 219, 220, 221, 222, 223, 224, 225, 226, 227, 228, 229, 230, 231, 232, 233, 234, 235, 236, 237, 238, 239, 240, 241, 242, 243, 244, 245, 246, 247, 248, 249, 250, 251, 252, 253, 254, 255, 256, 257, 258, 259, 260, 261, 262, 263, 264, 265, 266, 267, 268, 269, 270, 271, 272, 273, 274, 275, 276, 277, 278, 279, 280, 281, 282, 283, 284, 285, 286, 287, 288, 289, 290, 291, 292, 293, 294, 295, 296, 297, 298, 299, 300, 301, 302, 303, 304, 305, 306, 307, 308, 309, 310, 311, 312, 313, 314, 315, 316, 317, 318, 319, 320, 321, 322, 323, 324, 325, 326, 327, 328, 329, 330, 331, 332, 333, 334, 335, 336, 337, 338, 339, 340, 341, 342, 343, 344, 345, 346, 347, 348, 349, 350, 351, 352, 353, 354, 355, 356, 357, 358, 359, 360, 361, 362, 363, 364, 365, 366, 367, 368, 369, 370, 371, 372, 373, 374, 375, 376, 377, 378, 379, 380, 381, 382, 383, 384, 385, 386, 387, 388, 389, 390, 391, 392, 393, 394, 395, 396, 397, 398, 399, 400, 401, 402, 403, 404, 405, 406, 407, 408, 409, 410, 411, 412, 413, 414, 415, 416, 417, 418, 419, 420, 421, 422, 423, 424, 425, 426, 427, 428, 429, 430, 431, 432, 433, 434, 435, 436, 437, 438, 439, 440, 441, 442, 443, 444, 445, 446, 447, 448, 449, 450, 451, 452, 453, 454, 455, 456, 457, 458, 459, 460, 461, 462, 463, 464, 465, 466, 467, 468, 469, 470, 471, 472, 473, 474, 475, 476, 477, 478, 479, 480, 481, 482, 483, 484, 485, 486, 487, 488, 489, 490, 491, 492, 493, 494, 495, 496, 497, 498, 499, 500, 501, 502, 503, 504, 505, 506, 507, 508, 509, 510, 511, 512, 513, 514, 515, 516, 517, 518, 519, 520, 521, 522, 523, 524, 525, 526, 527, 528, 529, 530, 531, 532, 533, 534, 535, 536, 537, 538, 539, 540, 541, 542, 543, 544, 545, 546, 547, 548, 549, 550, 551, 552, 553, 554, 555, 556, 557, 558, 559, 560, 561, 562, 563, 564, 565, 566, 567, 568, 569, 570, 571, 572, 573, 574, 575, 576, 577, 578, 579, 580, 581, 582, 583, 584, 585, 586, 587, 588, 589, 590, 591, 592, 593, 594, 595, 596, 597, 598, 599, 600, 601, 602, 603, 604, 605, 606, 607, 608, 609, 610, 611, 612, 613, 614, 615, 616, 617, 618, 619, 620, 621, 622, 623, 624, 625, 626, 627, 628, 629, 630, 631, 632, 633, 634, 635, 636, 637, 638, 639, 640, 641, 642, 643, 644, 645, 646, 647, 648, 649, 650, 651, 652, 653, 654, 655, 656, 657, 658, 659, 660, 661, 662, 663, 664, 665, 666, 667, 668, 669, 670, 671, 672, 673, 674, 675, 676, 677, 678, 679, 680, 681, 682, 683, 684, 685, 686, 687, 688, 689, 690, 691, 692, 693, 694, 695, 696, 697, 698, 699, 700, 701, 702, 703, 704, 705, 706, 707, 708, 709, 710, 711, 712, 713, 714, 715, 716, 717, 718, 719, 720, 721, 722, 723, 724, 725, 726, 727, 728, 729, 730, 731, 732, 733, 734, 735, 736, 737, 738, 739, 740, 741, 742, 743, 744, 745, 746, 747, 748, 749, 750, 751, 752, 753, 754, 755, 756, 757, 758, 759, 760, 761, 762, 763, 764, 765, 766, 767, 768, 769, 770, 771, 772, 773, 774, 775, 776, 777, 778, 779, 780, 781, 782, 783, 784, 785, 786, 787, 788, 789, 790, 791, 792, 793, 794, 795, 796, 797, 798, 799, 800, 801, 802, 803, 804, 805, 806, 807, 808, 809, 810, 811, 812, 813, 814, 815, 816, 817, 818, 819, 820, 821, 822, 823, 824, 825, 826, 827, 828, 829, 830, 831, 832, 833, 834, 835, 836, 837, 838, 839, 840, 841, 842, 843, 844, 845, 846, 847, 848, 849, 850, 851, 852, 853, 854, 855, 856, 857, 858, 859, 860, 861, 862, 863, 864, 865, 866, 867, 868, 869, 870, 871, 872, 873, 874, 875, 876, 877, 878, 879, 880, 881, 882, 883, 884, 885, 886, 887, 888, 889, 890, 891, 892, 893, 894, 895, 896, 897, 898, 899, 900, 901, 902, 903, 904, 905, 906, 907, 908, 909, 910, 911, 912, 913, 914, 915, 916, 917, 918, 919, 920, 921, 922, 923, 924, 925, 926, 927, 928, 929, 930, 931, 932, 933, 934, 935, 936, 937, 938, 939, 940, 941, 942, 943, 944, 945, 946, 947, 948, 949, 950, 951, 952, 953, 954, 955, 956, 957, 958, 959, 960, 961, 962, 963, 964, 965, 966, 967, 968, 969, 970, 971, 972, 973, 974, 975, 976, 977, 978, 979, 980, 981, 982, 983, 984, 985, 986, 987, 988, 989, 990, 991, 992, 993, 994, 995, 996, 997, 998, 999, 1000.		Doc Release Status: RELEASED		Part No. B0714007	TITLE: Sink Top Assy
		Change Description: 1: Initial 0 - Change 2: Revised		Date: 10/01/00	Date: 20/05/00
Issue: A	Date: 10/01/00	Date: 20/05/00	Date: 20/05/00	MATERIAL:	
Author:	Checked:	Approved:	Produced:	Finish:	
Scale: 1:1	Scale: 1:1	Scale: 1:1	Scale: 1:1	Scale: 1:1	
File:	File:	File:	File:	File:	
DRAWINGS ARE IN UNLESS OTHER WISE STATED					

## Cubicle Sink Spares



1

Hand wash Button  
Cat No: 714007



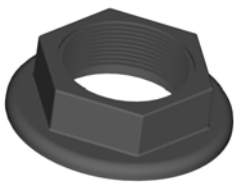
2

Faucet  
Cat No: 701555



3

Sink Drain  
Cat No: 701552

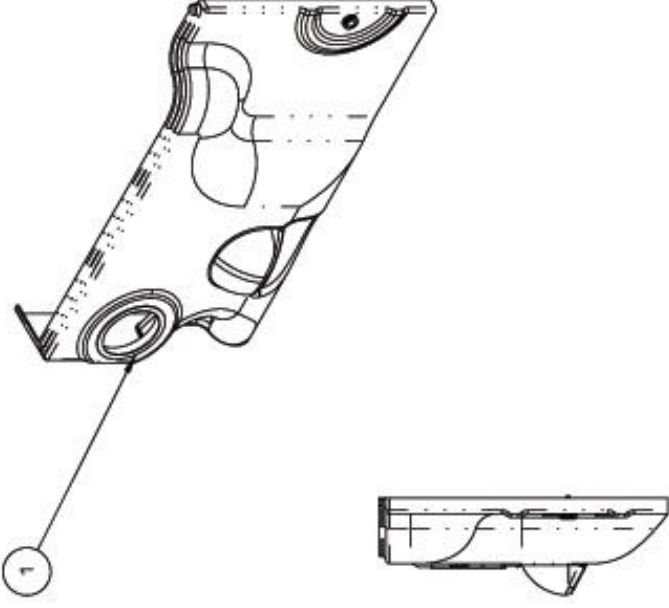


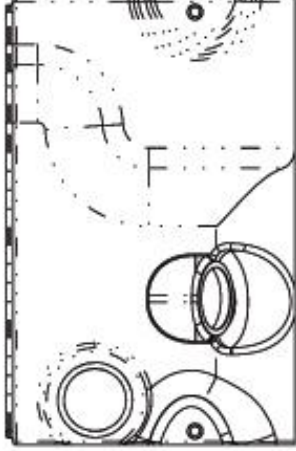


4

1/2" BSP Back Nut  
Cat No: 695504


No.	Description	Part No.	Qty
1	Retainer Clip	B0661218	1
2	Screw Knob BK	B0661219	2
3	-	-	-

<b>Shades Technics</b> South London Road & Services 1000 South London Road The drawing is the property of Shades Technics Ltd. It is to be used for the purpose of the contract only. It is not to be reproduced, stored, transmitted, or otherwise made available to any other person without the written consent of Shades Technics Limited.		Doc Release Status: <b>RELEASED</b>		Part No. B0661218	
		Issue Date: 1 Issue No: 1 Issue Description: see previous		Change Description: see previous	
TOLERANCES mm: .XX = ±0.01 .XXX = ±0.005 .XXXX = ±0.0025 FINISH: N.Y.S.		DRIVEN CHECKED APPROVED SCALE: N.Y.S.		TITLE: Lower Vanity Assy Ref: 5529 Centre Toilet MATERIAL: FINISH: 637	
ENGINEERING PURCHASING PRODUCTION		DATE: 20/05/00 DATE: 20/05/00 DATE: 20/05/00		FILE: 5529 00/01	



SHADES TECHNICS LTD. 5529 00/01



1

Retainer Ring  
Cat No: 661218



2

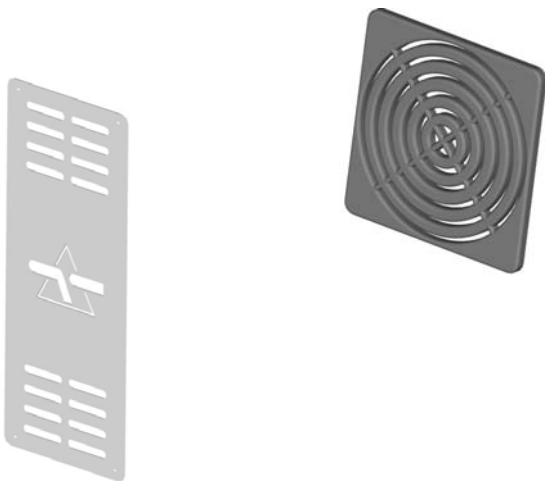
Vanity Screw Fixing  
Cat No: 661219

No.	Description	Part No.	Qty
1	Outer Cover & Liner	B0703300	1
2	Fridge Grill	B0661502	1
3	Fridge Vent	B0703302	1
4	Fridge Door Assy	B0703310	1
5	Hinges	B0661400	2
6	Lockable Handle	B0663020	1
7	Grab Handle	B0661160	1
8	Litter Bin Flap	B0661750	1
9	Fridge Plant	B0703108	1
10	Spare Key	B0663023	1

<b>Doc Release Status:</b> RELEASED	<b>Part No.:</b> 5529	<b>DATE:</b> 10/04/07	<b>DATE:</b> 02/05/02	<b>DATE:</b> 02/04/00	<b>DATE:</b> 02/04/00
<b>Shades Technics</b> Northbrook Road, Boreham, Essex, SSO 1 5LQ Tel: 0206 206 206 Fax: 0206 206 207 Email: sales@shades-technics.co.uk www.shades-technics.co.uk	<b>Engineering</b> Checked: [ ] Approved: [ ] Scale: N.T.S.	<b>Engineering</b> Checked: [ ] Approved: [ ] Scale: N.T.S.	<b>Engineering</b> Checked: [ ] Approved: [ ] Scale: N.T.S.	<b>Engineering</b> Checked: [ ] Approved: [ ] Scale: N.T.S.	<b>Engineering</b> Checked: [ ] Approved: [ ] Scale: N.T.S.
<b>Doc Release Status:</b> RELEASED	<b>Part No.:</b> 5529	<b>DATE:</b> 10/04/07	<b>DATE:</b> 02/05/02	<b>DATE:</b> 02/04/00	<b>DATE:</b> 02/04/00
<b>Shades Technics</b> Northbrook Road, Boreham, Essex, SSO 1 5LQ Tel: 0206 206 206 Fax: 0206 206 207 Email: sales@shades-technics.co.uk www.shades-technics.co.uk	<b>Engineering</b> Checked: [ ] Approved: [ ] Scale: N.T.S.	<b>Engineering</b> Checked: [ ] Approved: [ ] Scale: N.T.S.	<b>Engineering</b> Checked: [ ] Approved: [ ] Scale: N.T.S.	<b>Engineering</b> Checked: [ ] Approved: [ ] Scale: N.T.S.	<b>Engineering</b> Checked: [ ] Approved: [ ] Scale: N.T.S.
<b>Doc Release Status:</b> RELEASED		<b>Part No.:</b> 5529		<b>DATE:</b> 10/04/07	
<b>Shades Technics</b> Northbrook Road, Boreham, Essex, SSO 1 5LQ Tel: 0206 206 206 Fax: 0206 206 207 Email: sales@shades-technics.co.uk www.shades-technics.co.uk		<b>Engineering</b> Checked: [ ] Approved: [ ] Scale: N.T.S.		<b>Engineering</b> Checked: [ ] Approved: [ ] Scale: N.T.S.	
<b>Doc Release Status:</b> RELEASED		<b>Part No.:</b> 5529		<b>DATE:</b> 10/04/07	
<b>Shades Technics</b> Northbrook Road, Boreham, Essex, SSO 1 5LQ Tel: 0206 206 206 Fax: 0206 206 207 Email: sales@shades-technics.co.uk www.shades-technics.co.uk		<b>Engineering</b> Checked: [ ] Approved: [ ] Scale: N.T.S.		<b>Engineering</b> Checked: [ ] Approved: [ ] Scale: N.T.S.	



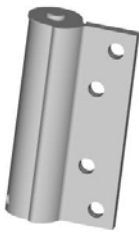


2

Fridge Grill  
Cat No: BO661502

3

Fridge Vent  
Cat No: 703302



4

Fridge Door Hinges  
Cat No: 661400



6

Lockable Handle  
Cat No: 663020



7

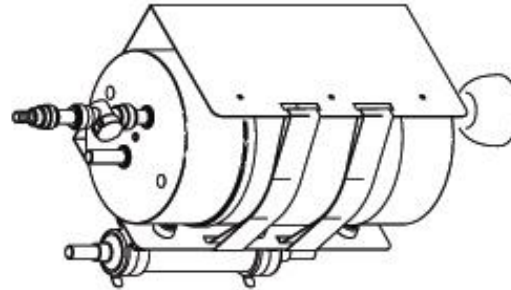
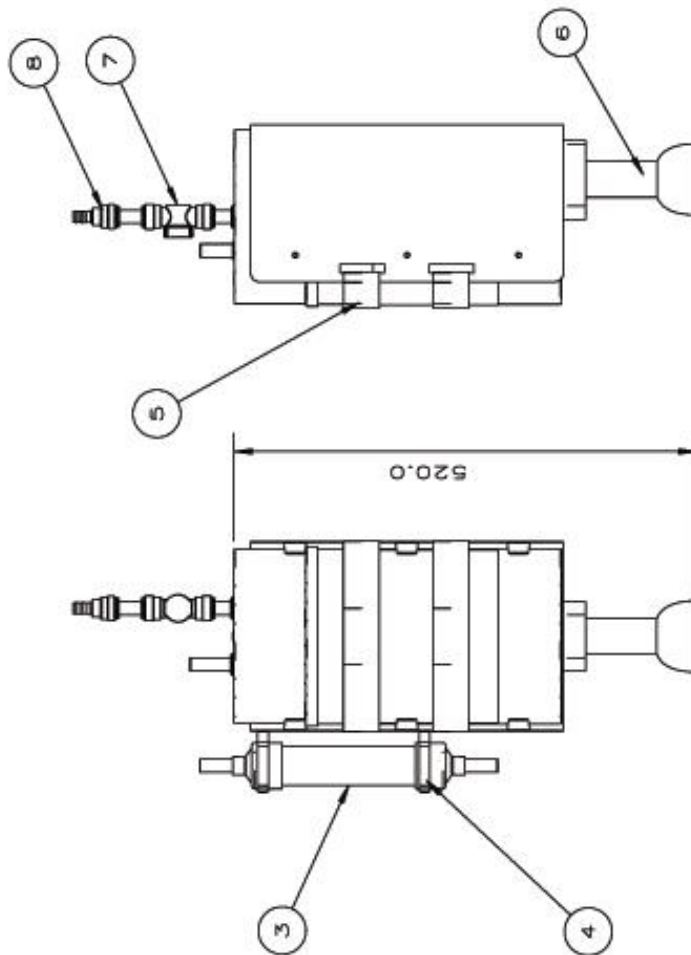
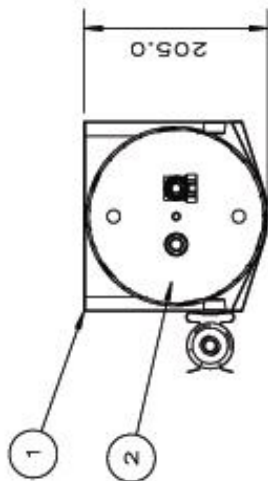
610mm Grab Handle  
Cat No: 661160



9

Fridge Plant  
Cat No: 703108

No.	Description	Part No.	Qty
1	Boiler Bracket	B0697205	1
2	Boiler	B0697010	1
3	Filter	B0722017	1
4	Filter Clips	B0713285	2
5	Boiler Straps	B0661501	2
6	Support	B0661978	1
7	Shut-Off Tap	B0747037	1
8	Hose-Barb Connector	B0747027	1



**Shades Technics**  
 South African leading & innovative  
 technical engineering and service  
 providers. Engineering and service  
 providers in the private property  
 of Shades Technics Ltd.  
 (Pretoria) South Africa. The Group consists  
 of Pretoria, Durban, Johannesburg, Cape Town,  
 Harare and Gaborone. (Pretoria) South Africa.

Doc Release Status: **RELEASED**

Issue Date: 18/08/2017  
 Issue No: 1  
 Change Description: 1 - Initial  
 per friends

Part No: 5529  
 Description: 5529 Drinks Boiler Assy  
 (centre toilet)

DATE: 18/08/2017  
 DATE: 18/08/2017  
 DATE: 18/08/2017

ENGINEERING: [initials]  
 PURCHASING: [initials]  
 PRODUCTION: [initials]

SCALE: 1:1.5

TOLERANCES:  
 mm: .XX = ±0.01  
 .XXX = ±0.005  
 MILLIMETRES: .X = ±.12

FILE: 08/XX

DATE: 18/08/2017  
 DATE: 18/08/2017  
 DATE: 18/08/2017

5529 Drinks Boiler Assy  
 (centre toilet)

MATERIAL: [blank]  
 FINISH: [blank]

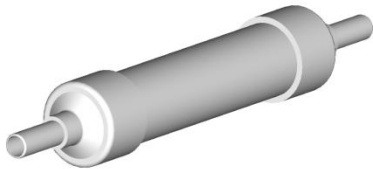
ENGINEERS ARE IN THE USAGES OTHERS ARE STATED

Drawing No: 519365



2

Drinks Boiler  
Cat No: 697010 (no drain)  
Cat No. 697016 (with drain)



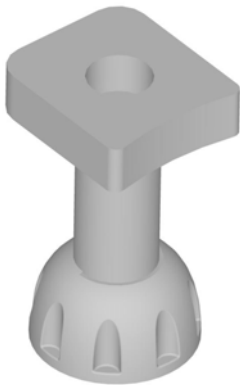
3

Drinks Filter (6month life)  
Cat No: 722017



4

Filter Clip  
Cat No: 713285



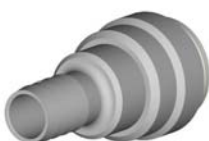
6

Support Leg  
Cat No: 661978



7

Shut-Off Tap  
Cat No: 747037



8

Hose Connector  
Cat No: 747027

No.	Description	Part No.	Qty
1	PCB	B0730005	1
2	Isonic Valve	B0735714	1
3	FR Circuit	B0712039	1
4	PCB Cover	B0730003	1
5	Screw Knob	B0713518	2
6	Cable Bushing	B0713519	1

SECTION A-A

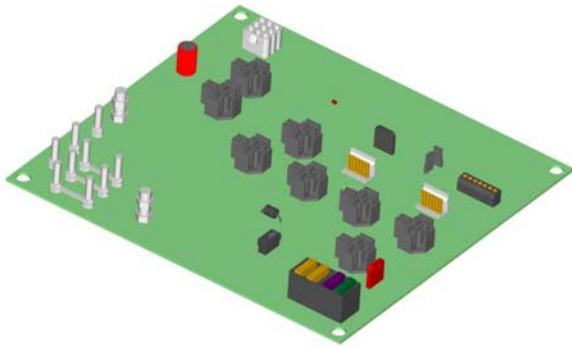
500.0

350.0

102.0

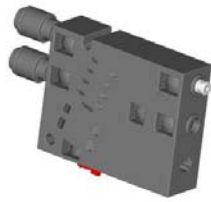
  
  

Doc Release Status: RELEASED		Part No.		5529 PCB Assembly	
		REVISED		TITLE	
Issue	Date	Rev No.	Change Description	DATE	BY
A		1	new product	06/06/00	63
The drawing is the property of Shades Technics and shall not be loaned, copied or reproduced without the prior written permission of Shades Technics, 10000 Highway Drive, New-Orleans, LA 70128.		TOLERANCES: .X = ±0.1 .XX = ±0.01 .XXX = ±0.005 FRACTIONAL .X = ±.02		ENGINEERING CHECKED APPROVED SCALE N.T.S.	
		MATERIAL: PER#		DATE 06/06/02 DATE 06/06/00 DATE 06/06/00 FILE	
		SHOWING ARE IN RED UNLESS OTHERWISE STATED		SHADING, INC. STR363	



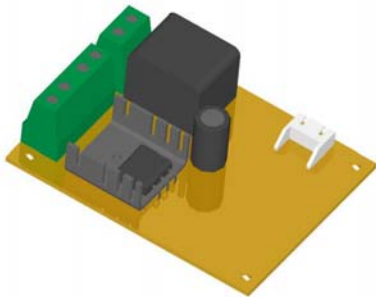
1

PCB  
Cat No: 730005



2

Isonic Valve  
Cat No: 735714



3

PIR PCB (Light Controller)  
Cat No: 712025  
(Comes with sensing eye)



4

PCB Cover  
Cat No: 730003



5

Screw Knob  
Cat No: 713518



6

Cable Bushing  
Cat No: 713519



## Cubicle Toilet Seat Spares



1

Seat & Lid  
Cat No: 735101

2

Splash Shield  
Cat No: 731270

3

Bowl Assy  
Cat No: 731280

4

Water Jet  
Cat No: 731290



5

Flap & Seal  
Cat No: 731285

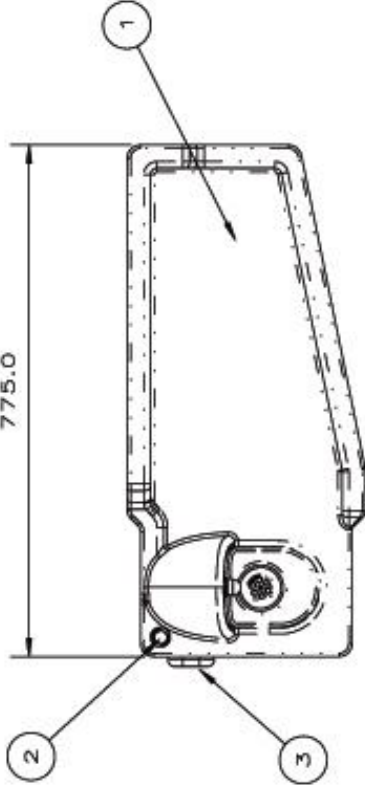
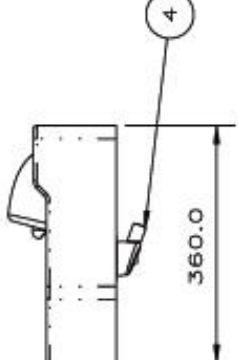
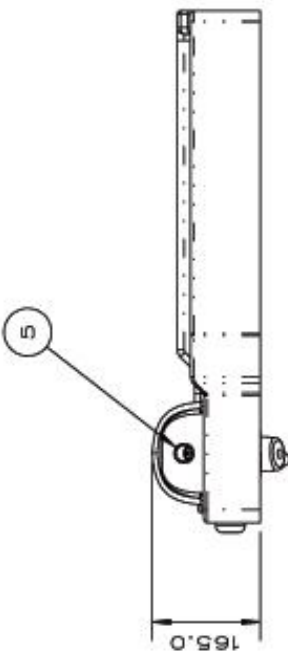
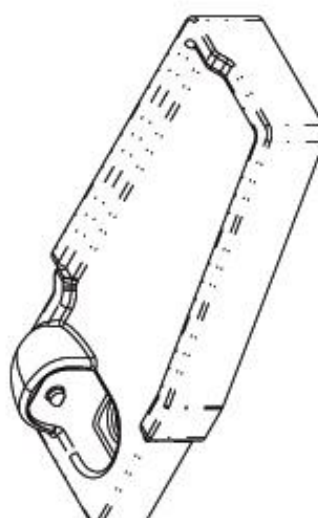
6

SS Hinges  
Cat No: 735102

**Seat, Lid & SS Hinges  
Cat No: 735100**

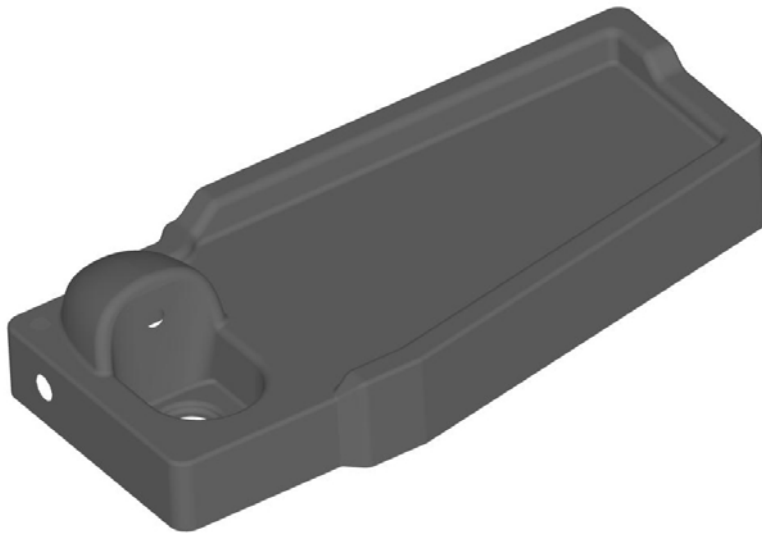


No.	Description	Part No.	Qty
1	Worktop	B0601350	1
2	Button	B0714007	1
3	Engaged Lamp	B0712003	1
4	Sink Waste	B0701552	1
5	Faucet	B0663603	1

Doc Release Status: <b>RELEASED</b>		Part No.:		TITLE:	
		5529 Drinks Worktop (centre toilet)		DATE: 02/02/07	
Issue Date: 1 Issue No: A		Change Description: 1 - Initial 2 - Design 3 - Detail 4 - New Product		DATE: 02/02/00 DATE: 02/04/00 DATE: 02/04/00	
The drawing is the property of Shades Technics Ltd. It is to be used for the production of the worktop only. It is not to be used for any other purpose. The drawing is the property of Shades Technics Ltd. It is to be used for the production of the worktop only. It is not to be used for any other purpose.		TOLERANCES: mm: .XX = ±0.01 .XXX = ±0.005 .XXX = ±0.005		FILE: 02/04/00 SCALE: 1:1	
Part No. 5529001 Change Description: 1 - Initial 2 - Design 3 - Detail 4 - New Product		DRAWN: [Signature] CHECKED: [Signature] APPROVED: [Signature]		MATERIAL: [Blank] FINISH: [Blank]	
Part No. 5529001 Change Description: 1 - Initial 2 - Design 3 - Detail 4 - New Product		ENGINEERING: [Blank] PURCHASING: [Blank] PRODUCTION: [Blank]		SHADING INC. STRASSBOURG	





1

Worktop Assy  
Cat No: 801350



2

Drinks Button  
Cat No: 714007



3

Engaged Lamp  
Cat No: 712003



4

Sink Drain  
Cat No: 701552



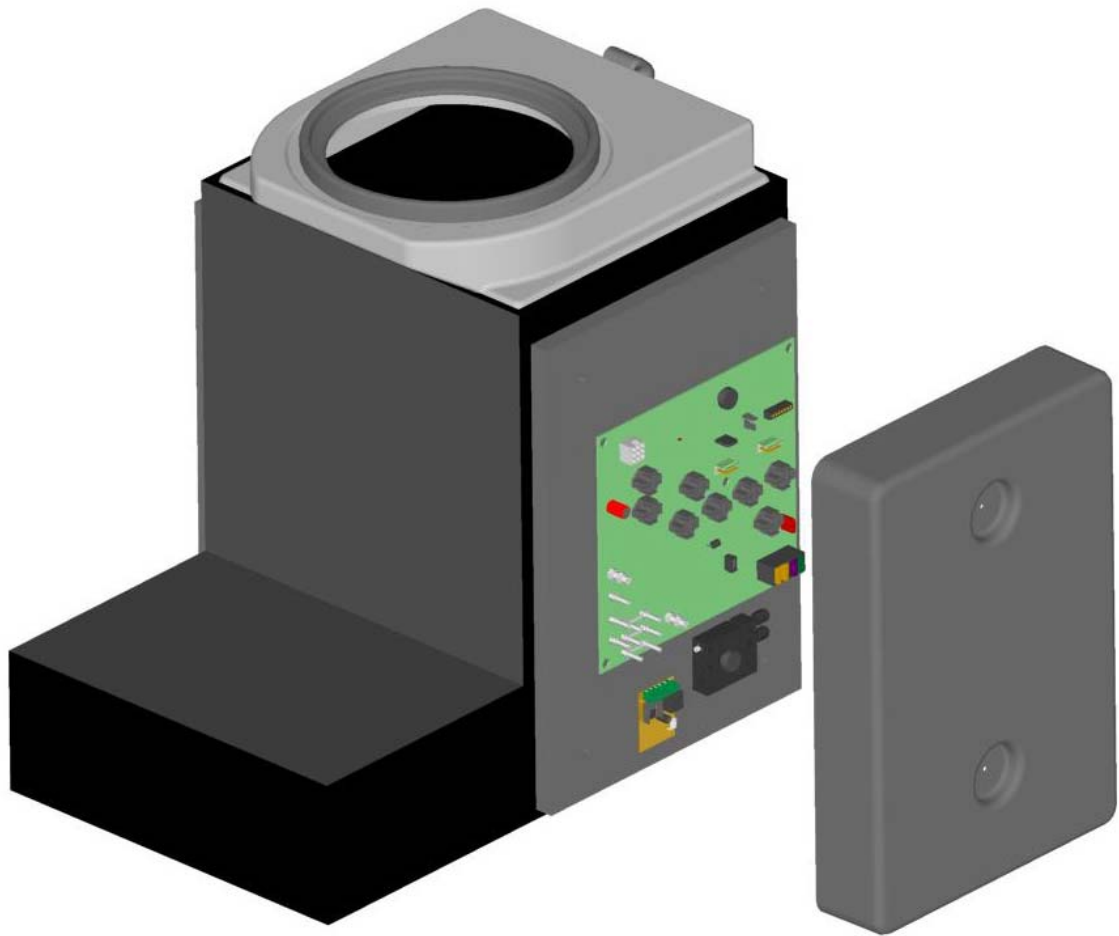
5

Faucet  
Cat No: 663603

No.	Description	Part No.	Qty
1	Soil Tank & Lid	B0731005	1
2	Replacement Seal	B0732068	1
3	Float Switch	B0714510	1
4	Overflow Fitting	B0747036	1
5	PCB Cover	B0730003	1
6	Spigot (Dump Valve)	B0735701	1
7	Cover Fixing Knobs	B0713518	2

<b>Shades Technics</b> Hardware, England Tel: 01283 807883 The drawing is the property of Shades Technics and is not to be re-used, copied or reproduced without the written permission of Shades Technics. The firm's full name and address are: Shades Technics, The Mill Lane, Harrogate, North Yorkshire, HG2 9TL.		Doc Release Status: RELEASED		Part No. B0731005		TITLE: 5529 Soil Tank Assy (centre toilet)			
Issue	Date	Rev No.	Change Description	Issue	Date	Rev No.	Change Description		
A		1	Rev Product	FILE	06/06/00	03	FRSH		
TOLERANCES: mm .X = ±0.1 .XX = ±0.01 .XXX = ±0.005				DATE 06/06/07 DATE 06/06/00 DATE 06/06/00				DRAWING NO. 5529	
CHECKED APPROVED		ENGINEERING PURCHASING PRODUCTION		SCALE N.T.S.		SHADDES AVE. 41 WIL SALICHS OTHER WISE STATED			
DRAWING NO. 5529									



1

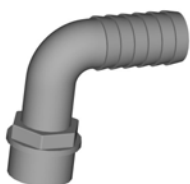
Soil Tank Assy  
Cat No: 731005

3

Float Switch  
Cat No: 714510

4

Overflow Fitting  
Cat No: 747036



# Hand Wash Tank Spares

No.	Description	Part No.	Qty
1	27Ltr Tank	B0733085	1
2	Hatch Cover	B0732070	1
3	1/2" BSP Hose Barb	B0744018	1
4	3/4" BSP Hose Barb	B0747036	1
5	Stem Elbow	B0747018	2
6	15mm Pipe	B0747052	140mm
7	Shut-Off Tap	B0747037	1
8	15mm Pipe	B0747052	60mm
9	Male Coupler	B0747028	2
10	Lever Float Switch	B0714510	1
11	Hand Wash Pump	B0702110	1

**5529 HW Tank Assy  
(centre toilet)**

**DATE** 27/05/07    **DATE** 05/05/08    **DATE** 05/06/08

**ENGINEER** LF    **CHECKED**    **APPROVED**    **SCALE** N.T.S.

**PURCHASING**    **PRODUCTION**    **FILE** BMS 08/VI

**TOLERANCES**    **FINISHES**

mm .X = 20.0  
.XX = 20.0  
.XXX = 20.005

mm .X = 12

**Doc Release Status:** RELEASED

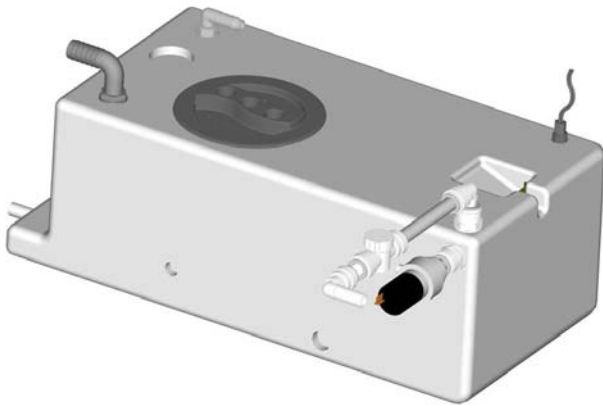
**Issue Date:** 1/10/08    **Issue Description:** A - Mass O - Change see previous

**Shades Technical Services**  
Northumbria, England Tel: 01670 433333

© 2008 Shades Technical Services  
All rights reserved. This document is the property of Shades Technical Services Ltd. No part of this document may be reproduced, stored in a retrieval system, or transmitted in any form or by any means, electronic, mechanical, photocopying, recording, or by any information storage and retrieval system, without the prior written permission of Shades Technical Services Ltd.

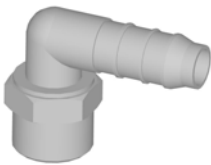
**Part No.:** 5529 HW Tank Assy  
**Revision:** 01

## Hand Wash Tank Spares



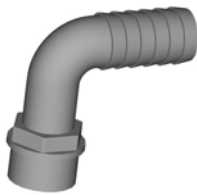
1

Assembled Hand Wash Tank  
with Fittings  
Cat No: 733085



3

1/2" Swivel Hose Connector  
Cat No: 744018



4

Overflow Fitting  
Cat No: 747036



9

Tank Coupler 15mm  
Cat No: 747028



10

Float Switch  
Cat No: 714510



11

Hand Wash Pump  
Cat No: 702110

No.	Description	Part No.	Drng No.	Qty
1	Sink Top Assy	E5529001	ST6358	1
2	Flush Button	B0714007	-	1
3	Bin Chute	-	-	1
4	Lower Vanity Assy	E5529002	ST6359	1
5	Swing Flush	B0731280	ST6371	1
6	Extractor Fan & Grill	B0727502	-	1
7	Bolier Assy	B0697300	ST6365	1
8	Hand Wash Tank	B0733100	ST6221	1
9	Litter Bin	B0661003	-	1
10	Adjustable Supports	B0661978	-	5
11	Soil Tank	B0731006	ST6362	1
12	PCB Assy	E5529015	ST6363	1

<b>Shades Technics</b> South Division, 10000 10th Avenue North York, Ontario M2H 1A7 Tel: (416) 491-1000		Do not use for other than the property of the client. All rights reserved. No part of this document may be reproduced, stored in a retrieval system, or transmitted, in any form or by any means, electronic, mechanical, photocopying, recording, or by any information system, without the prior written permission of Shades Technics.	
Doc Release Status: <b>RELEASED</b>		Part No. / Description:	
Issue	Date	Change Description	By / For
A		1 - Initial	See Previous
TOLERANCES: mm: X = 0.01 Y = 0.02 Z = 0.05 UNLESS OTHERWISE SPECIFIED		Part No. / Description:	
DRAIN	CHECKED	APPROVED	SCALE
ENGINEERING	PURCHASING	PRODUCTION	N.T.S.
DATE 21/06/07	DATE 02/05/08	DATE 20/06/09	FILE
			8044 04/04
TITLE: Base Assembly		Ref: 5529 Centre Toilet	
MATERIAL:		FINISH:	
DIMENSIONS ARE IN MILLIMETERS UNLESS OTHERWISE STATED		DRAWING NO. ST6354	

## Cubicle Base Spares



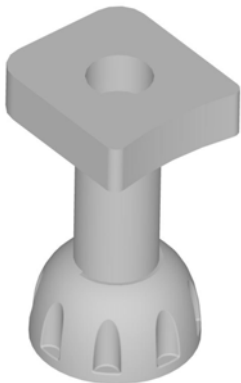
2

Drinks Button  
Cat No: 714007



6

Ventilator Fan  
Cat No: 727502



10

Adjustable Supports  
Cat No: 661978



No.	Description	Part No.	Drg No.	Qty
1	Worktop	B0801355	ST6360	1
2	Mirror	B0661825	-	1
3	Soop Dispenser	B0661660	-	1
4	Fridge Assy	B0801305	ST6361	1
5	Grab Handle	B0661160	-	1

<b>Doc Release Status:</b> RELEASED	<b>Part No.</b> Purchased	<b>TOUCHSCREEN:</b> No. = 101 Yes = 101 No = 101	<b>DRASH:</b> Checked	<b>ENGINEERING:</b> Checked	<b>DATE:</b> 21/06/07	<b>TITLE:</b> Top Assembly
<b>Issue:</b> A	<b>Issue:</b> 1	<b>RELINQ:</b> 'K' = 12	<b>APPROVED:</b>	<b>APPROVED:</b>	<b>DATE:</b> 02/05/02	<b>Ref:</b> 5529 Centre Toilet
<b>Change Description:</b> 1 - New product	<b>Change Description:</b> 1 - New product				<b>DATE:</b> 02/05/02	<b>MATERIAL:</b> FRSHT
			<b>SCALE:</b> N.T.S.	<b>SCALE:</b> N.T.S.	<b>DATE:</b> 02/05/02	<b>FILE:</b> B0801305

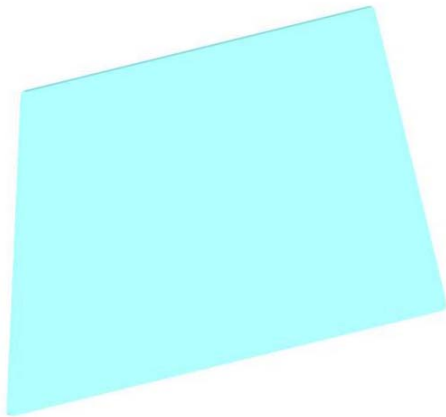
<b>Shades Technics</b> Northbrook House, 10000 Northbrook, England, W16 7AA	<b>Shades Technics Ltd</b> 10000 Northbrook, England, W16 7AA	<b>Shades Technics Ltd</b> 10000 Northbrook, England, W16 7AA
---	--	--

<b>Shades Technics</b> Northbrook House, 10000 Northbrook, England, W16 7AA	<b>Shades Technics Ltd</b> 10000 Northbrook, England, W16 7AA
---	--



## Cubicle Top Spares



2

Mirror  
Cat No: 661825



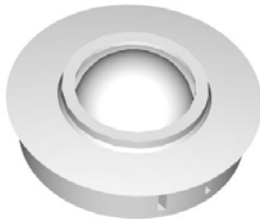
3

Soap Dispenser  
Cat No: 661660



5

610mm Grab Handle  
Cat No: 661160



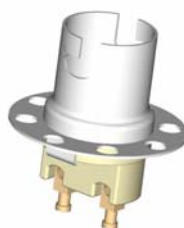
6

PIR Sensor (includes PCB)  
Cat No: 712025



7

Bayonet Bulb  
Cat No: 712028



8

Bayonet Bulb Holder  
Cat No: 712027

No.	Description	Part No.	Drg No.	Qty
1	Fridge Assembly	BO801305	ST6361	1
2	Worktop Assembly	BO801355	ST6360	1
3	Cubicle Top Assembly	-	ST6355	1
4	Sink Top Assembly	-	ST6358	1
5	Vanity Assembly	-	ST6359	1
6	Large Grab Handle	BO661161	-	1
7	45Ltr Litter Bin	BO661003	-	1
8	Door Fascia	BO661110	-	1
9	Door Assembly	BO661111	ST6357	1
10	Boiler Assembly	BO697300	ST6365	1
11	Swing Flush Bowl Assy	BO731280	ST6371	1
12	Hand Wash Tank Assy	BO733100	ST6221	1
13	Cubicle Base Assembly	-	ST6354	1
14	Soil Tank Assembly	BO731006	ST6362	1
15	Electricals	-	ST6363	1
16	PCB Cover	BO730010	ST6362	1
-	Upper vanity (option)	-	ST6364	1

Page 1/2

Shades Technics  
 South London Road, Buntingford, Cambridgeshire  
 Tel: 01438 711111 Fax: 01438 711112  
 Email: sales@shades-technics.co.uk Website: www.shades-technics.co.uk

Doc Release Status: **Sample for Quote**

Part No: BO675529  
 Description: Centre Toilet  
 Revision: 1

Issue: A Date: 01/01/2011 Change Description: 1 - New 0 - Change  
 Author: J. Perrett

Drawn: ENGINEERING  
 Checked: PURCHASING  
 Approved: PRODUCTION

DATE: 01/01/2011  
 DATE: 01/01/2011  
 DATE: 01/01/2011

TOLERANCES: mm: 20:1, 30:0.1, 30:0.05  
 HOLE DIA: 12

SCALE: N.T.S.

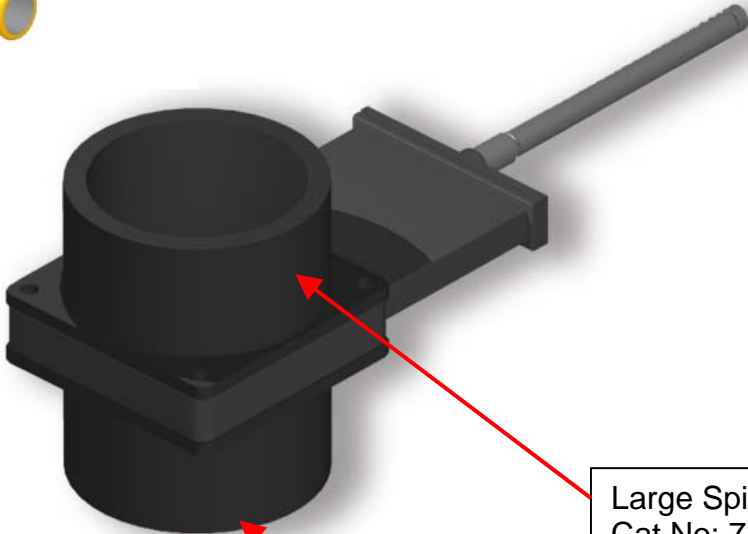
TITLE: B0675529 Centre Toilet (UK Spec)  
 MATERIAL: FR88  
 FILE: Base 081K

SHADES TECHNICS ARE IN NO WAY RESPONSIBLE FOR THE CONTENTS OF THIS DRAWING

ST6356



Flush Pump  
Cat No: 702140



Large Spigot (Cut to 15mm)  
Cat No: 735754

Gate Valve Assy  
Cat No: 735753

Large Spigot (Cut to 25mm)  
Cat No: 735755



6

Large Grab Handle  
Cat No: 661161



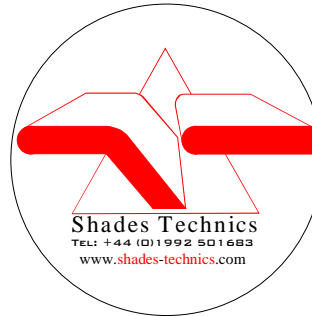
**No Standing**  
Cat No:735560



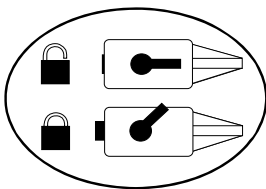
**Emergency Alarm**  
Cat No:735566



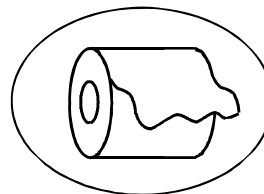
**No Smoking**  
Cat No:735563



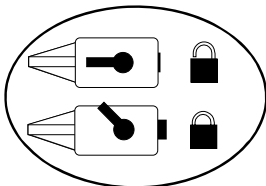
**Shades Technics**  
Cat No:735568



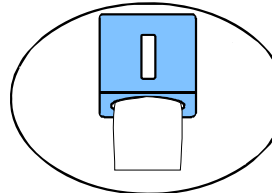
**Door Lock LH**  
Cat No:735571



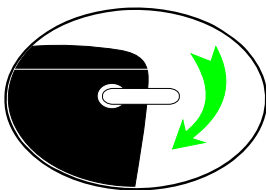
**Toilet Roll**  
Cat No:735569



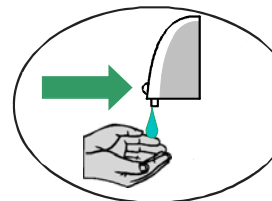
**Door Lock RH**  
Cat No:735564



**Hand Towel Dispenser**  
Cat No:735573



**Flush**  
Cat No:735562



**Soap Dispenser**  
Cat No:735572

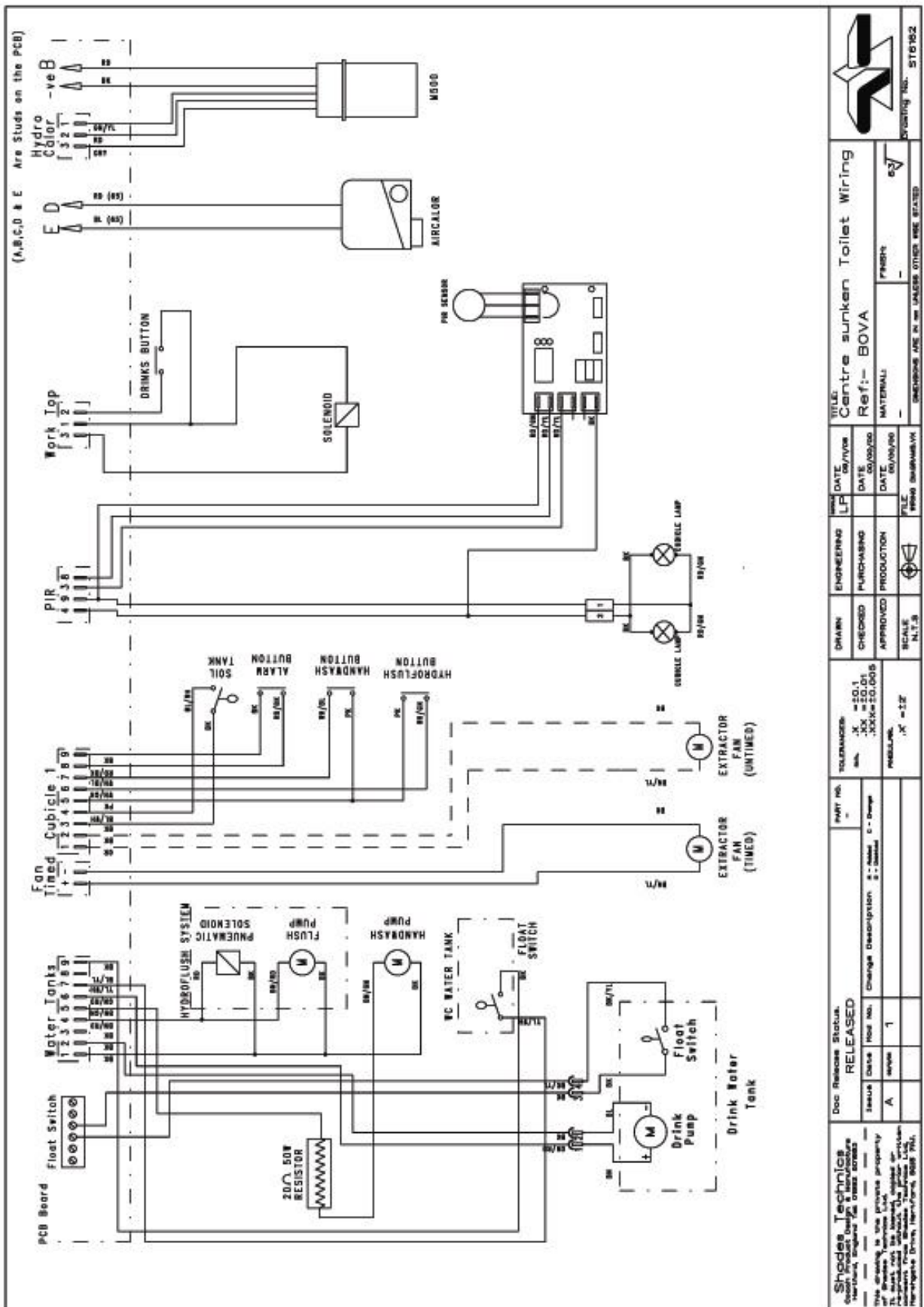


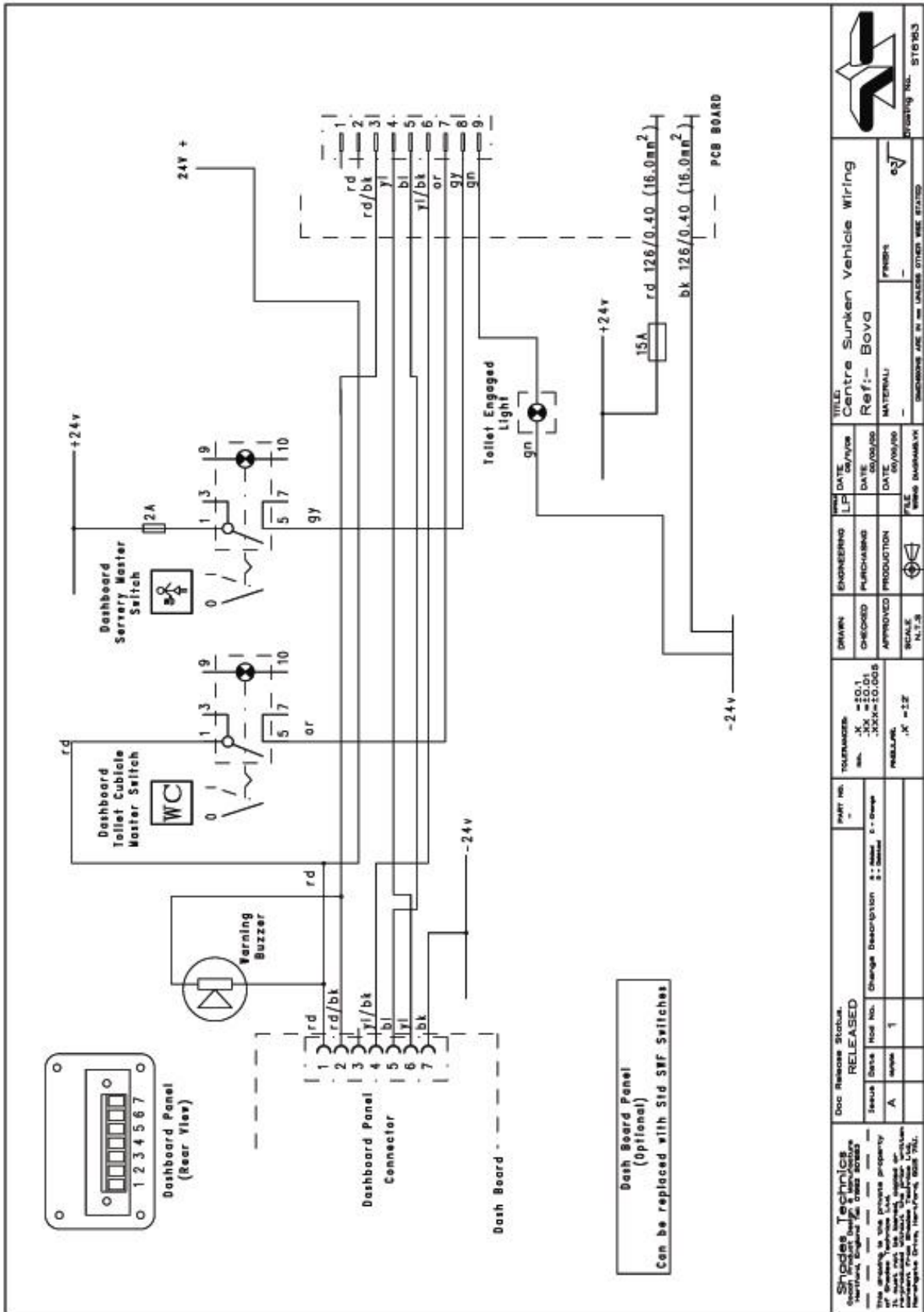
**Hand wash**  
Cat No:735561



**Litter Bin**  
Cat No:735567

**Full Set Of Labels**  
Cat No: 735570  
Please specify **LEFT** or **RIGHT** hand cubicle when placing order for labels





<b>Shades Technics</b> Northampton, England Tel: 01603 820000		Doc Release Status: <b>RELEASED</b>		PART NO: -		TOLERANCES: mm .X = ±0.1 .XX = ±0.01 .XXX = ±0.005		DRAWN: CHECKED: APPROVED:		ENGINEERING: PURCHASING: PRODUCTION:		DATE: 05/03/00 DATE: 05/03/00 DATE: 05/03/00		FILE NO: 037	
The drawing is the property of Shades Technics Ltd. It must not be copied, reproduced or transmitted in any form or by any means, electronic, mechanical, photocopying, recording or otherwise, without the prior written permission of Shades Technics Ltd.		Change Description: 1 - Initial 2 - Detail 3 - Amend 4 - Drop		Scale: N.T.S.		MATERIAL:		FINISH:		TITLE: Centre Sunken Vehicle Wiring		REF: Bova		DRAWING NO: STD1013	

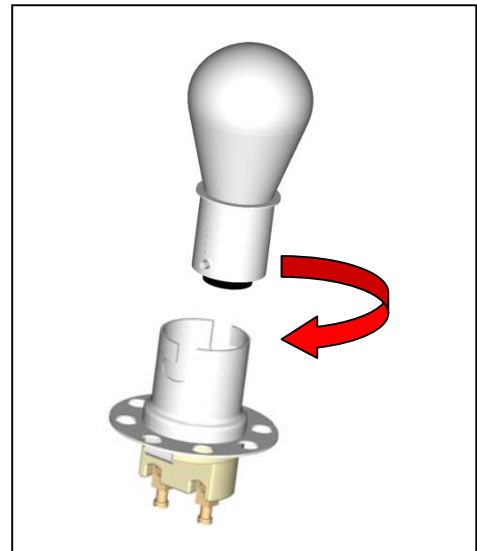
The following section details where to find key components and how to replace them.

Part = Bulbs

Location = Cubicle Top

Replacement....

1. DISCONNECT THE POWER TO THE CUBICLE
2. REMOVE PLASTIC LIGHT COVER – 4x NYLON SCREWS
3. DISCONNECT PIR CONNECTOR
4. TWIST BULB TO RELEASE AND REPLACE



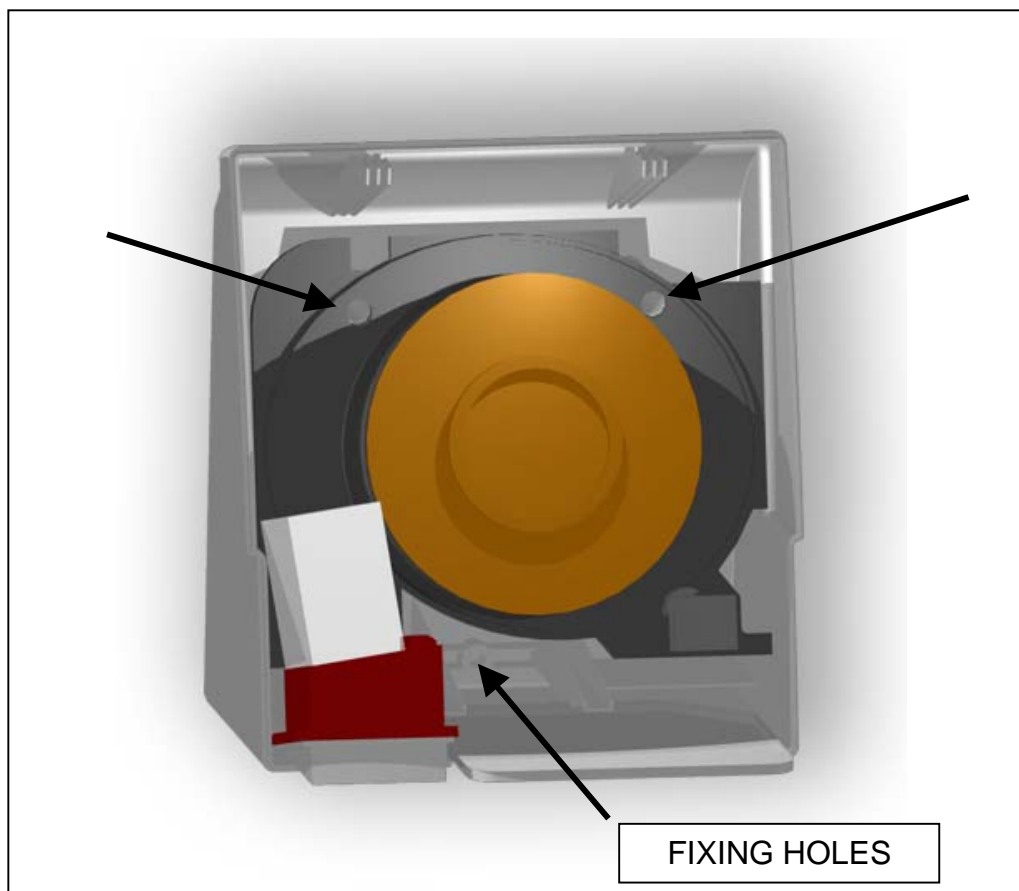


Part = Hand Drier (*Optional*)

Location = Behind Upper Vanity Door

Replacement....

1. DISCONNECT THE POWER TO THE CUBICLE
2. UNLOCK AND OPEN THE UPPER VANITY DOOR
3. REMOVE 2x SCREWS ON THE UNDERSIDE OF THE HAND DRIER
4. REMOVE THE FRONT COVER OF THE HAND DRIER
5. REMOVE 2x RUBBER HOLE COVERS
6. REMOVE 3x SCREWS RELEASING THE UNIT FROM THE WALL
7. DISCONNECT THE 2 CABLES PASSING THROUGH THE OUTER WALL OF THE CUBICLE MAKING SURE THEY DO NOT FALL DOWN THE BACK
8. RE-CONNECT A NEW UNIT AND SCREW TO THE WALL
9. MAKE SURE THE RUBBER HOLE COVERS ARE RE-FITTED AND FIT THE COVER SECURING WITH BOTH SCREWS



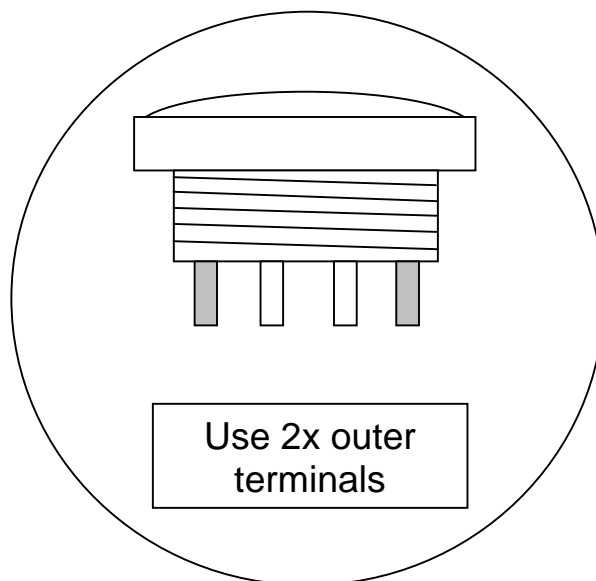


Part = Hand Wash & Flush Buttons

Location = Sink Vanity & Worktop

Replacement....

1. DISCONNECT THE POWER TO THE CUBICLE
2. UNLOCK LOWER VANITY DOOR
3. REMOVE TERMINALS FROM THE BACK OF THE BUTTON
4. UNSCREW THE COLLAR ON THE UNDERSIDE OF THE BUTTON
5. BUTTON SHOULD RELEASE FROM THE TOP
6. RE-FIT NEW BUTTON AND CONNECT THE TERMINALS

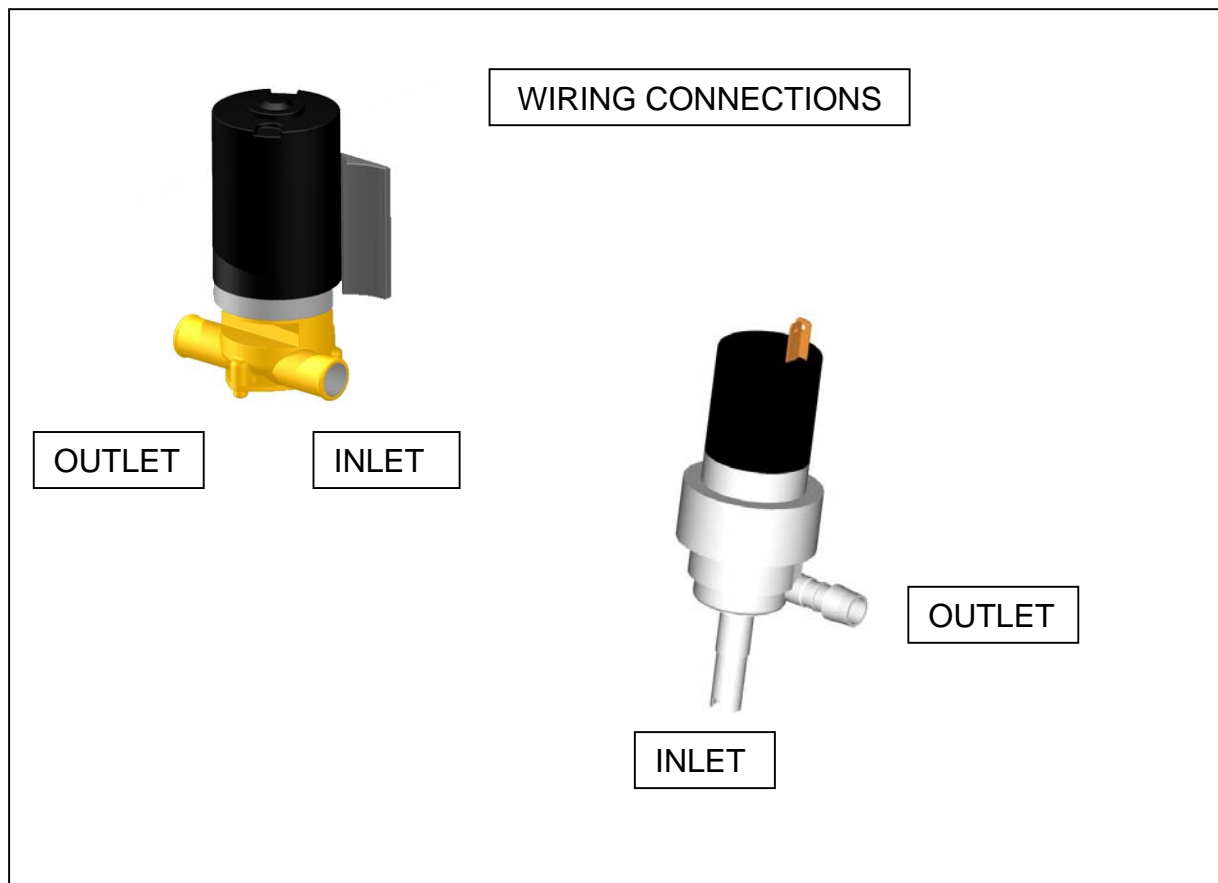


Part = Hand Wash & Flush Pump

Location = Locker

Replacement....

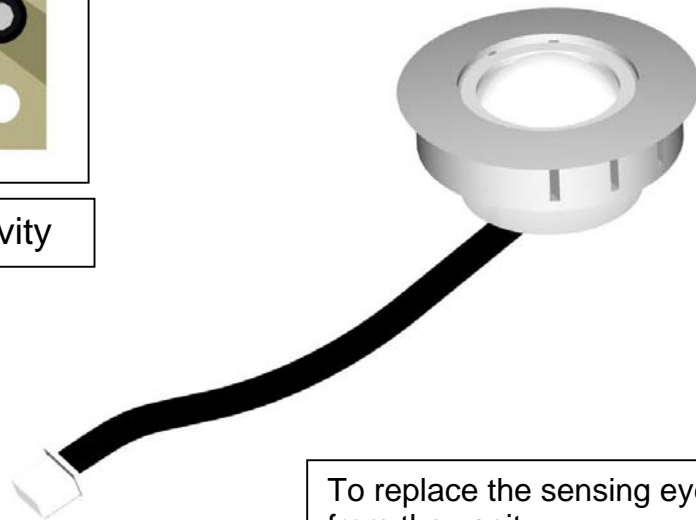
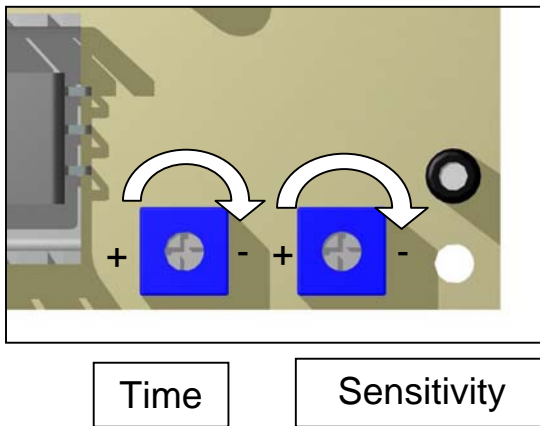
1. DISCONNECT THE POWER TO THE CUBICLE
2. UNLOCK LOWER VANITY DOOR
3. DRAIN FRESHWATER TANK
4. DISCONNECT THE WIRES TO THE PUMP
5. REMOVE FROM SECURING CLIP
6. RELEASE INLET AND OUTLET PIPES
7. RE-FIT NEW PUMP MAKING SURE THAT BOTH INLET AND OUTLETS ARE WATER TIGHT AND THE FLOW ARROW IS POINTING IN THE CORRECT DIRECTION
8. RE-CONNECT THE POWER
9. CLOSE THE DRAIN ON THE SUPPLY TANK
10. RE-FILL TANK WITH FRESHWATER
11. SWITCH ON POWER TO CUBICLE
12. PRIME PUMP WITH 2-3 BUTTON PUSHES



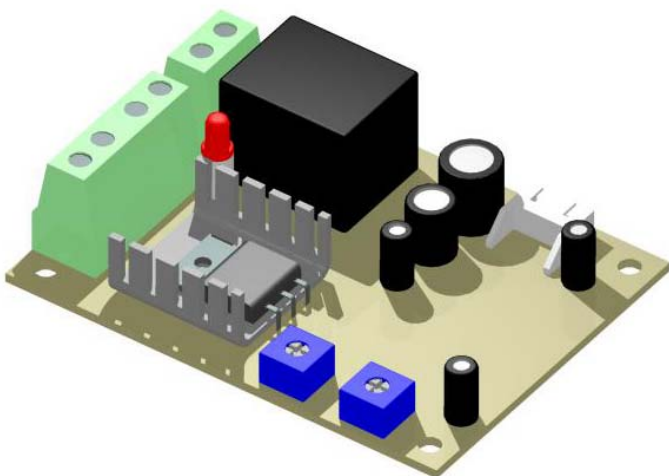
Part = PIR Adjustment & Replacement

Location = Upper Vanity Cupboard – Circuit Board / Vanity - Sensor Adjustment....

1. POWER ON
2. OPEN UPPER VANITY DOOR
3. ADJUST THE 2X BLUE VARIABLE RESISTORS AS SHOWN BELOW



To replace the sensing eye unclip from the vanity.



To replace the PCB unscrew the board from the vanity & disconnect the plug.